

WEBSTER DETENTION CENTER

AUGUSTA, GEORGIA, UNITED STATES

INTRODUCTION

Webster Detention Center is a medium-security adult pod-style detention center in Augusta. Opened in 1997, it was originally designed to alleviate overcrowding at the now-closed Richmond County Jail. The 50-acre Webster campus has grown through two addition and renovation phases and today has bed space for 1,050 inmates and a security and support staff of 150 personnel.

PROJECT DETAILS

An expansion project in 2011 included construction of new housing units with medical and mental health facilities and a video visitation center. Reliable Controls Authorized Dealer SouthEast Automated Systems retrofitted the existing chiller plant and installed a new building automation system as part of the project.

All HVAC systems in the facility communicate using MACH-ProSys controllers over MS/TP. SouthEast Automated Systems also installed comprehensive smoke control for each housing pod connected to a central override panel. SouthEast designed the smoke control system and override panel to include floor plans and LED functional overrides with command and control using MACH-Global controllers.

The new building automation system provided facility managers with a low controller count, command control over the internet, and a simple solution for complex smoke-control sequences.

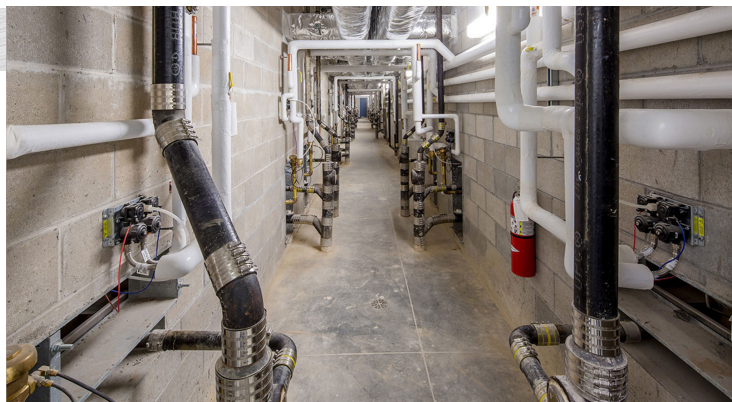
Interested in Reliable Controls technology for your next project?

Find an Authorized Dealer near you:

reliablecontrols.com/sales

Explore other Reliable Controls projects:

reliablecontrols.com/projects/profiles



MARKET SEGMENT

Corrections

PROJECT TYPE

New construction and retrofit

INSTALLATION TYPE

HVAC

TOTAL AREA

24,000 m² (258,340 ft²)

PROTOCOL

BACnet

INSTALLED EQUIPMENT

36 MACH2™ controllers
2 MACH-Global™ controllers
8 MACH-Global expansion cards
10 MACH-ProCom™ controllers
7 MACH-ProSys™ controllers
1 MACH-ProWebSys™ controller

TOTAL SYSTEM OBJECTS

463

**RELIABLE CONTROLS
 AUTHORIZED DEALER**

